

Proceedings of the 10th Workshop “Seabed Acoustics”, Presentation P11:

Ultra-high-resolution 2D/3D seismic data for munition detection

José Felipe Barradas
VLIZ Flanders Marine Institute, Belgium

10th November 2022



ULTRA-HIGH-RESOLUTION 2D/3D SEISMIC DATA FOR MUNITION DETECTION

José Felipe Barradas jose.barradsa@vliz.be
Thomas Mestdagh thomas.mestdagh@vliz.be
Tine Missiaen tine.missiaen@vliz.be

Overview

- BASTA Project
- Equipment
- SBP: Modes Comparison
- Integration with magnetics and MB
- Detection ranges
- 3D Results
- Conclusions and future work

2



Boost Applied munition detection through Smart data
inTegration and AI workflows

Develop more efficient data acquisition and object detection strategies

2D/3D ultra-high-resolution acoustics

Correlation with multibeam and magnetic (gradiometer) data

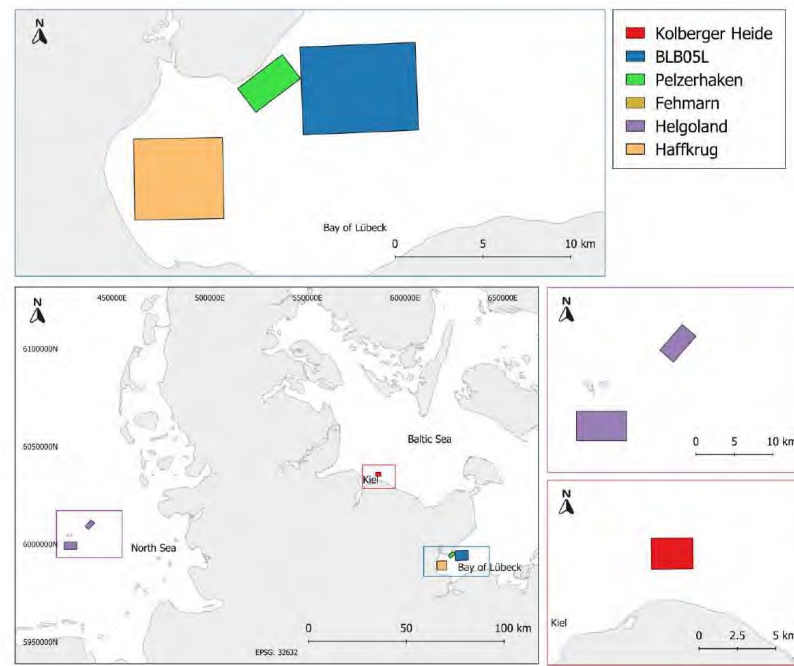


3



Surveys

2020-2021

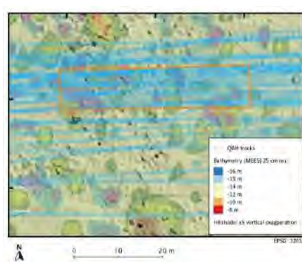


4

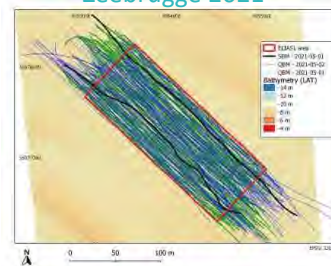
VLIZ

3D Surveys

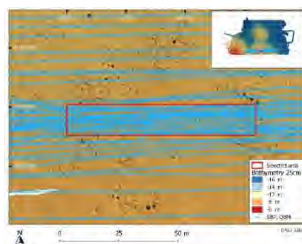
Kolberger Heide 2020



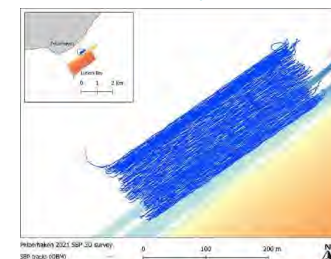
Zeebrugge 2021



Lubeck Bay 2020



Lubeck Bay 2021



5

VLIZ

Equipment

Innomar SES-2000 Quattro



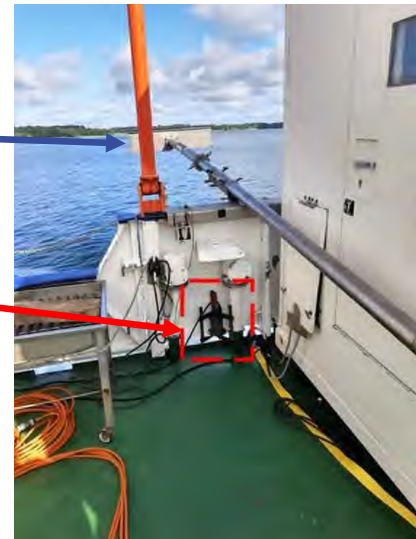
Acquisition unit

Multi-transducer SBP



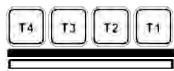
4 Transducers

+ Motion sensor
+ GNSS

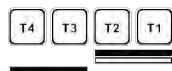


Kolberger Heide, RV Littorina (June 2020)

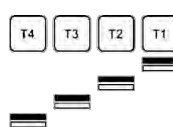
Single Beam Mode



Dual Beam Mode



Quadruple Beam Mode



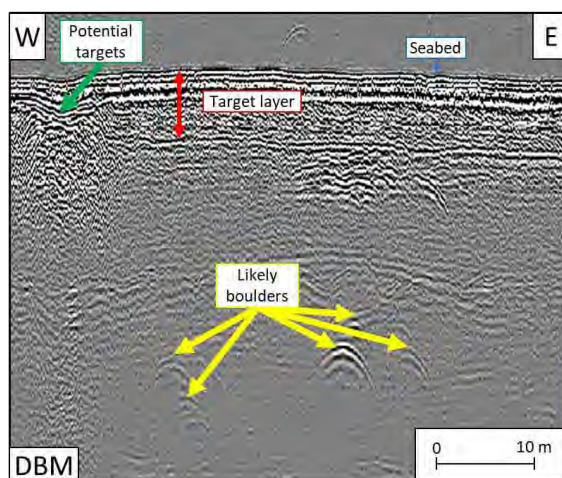
— Transmitting
— Receiving

6

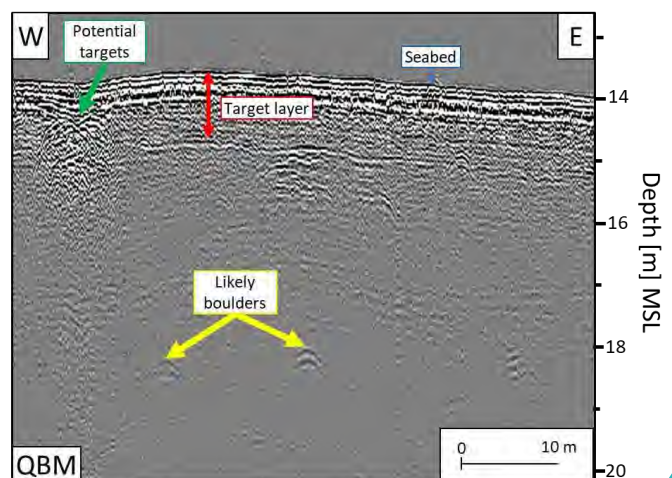


Modes comparison

Dual Beam Mode



Quadruple Beam Mode

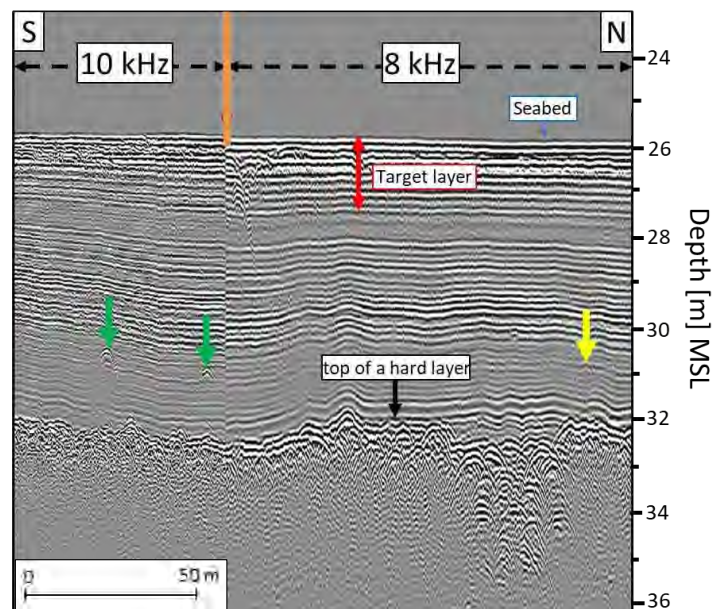


7



Frequency comparison

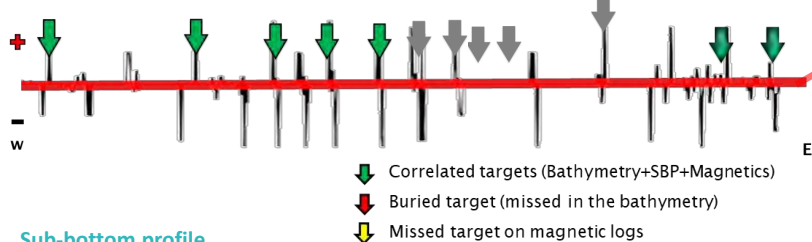
Single Beam Mode



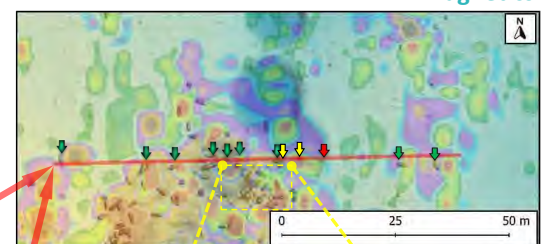
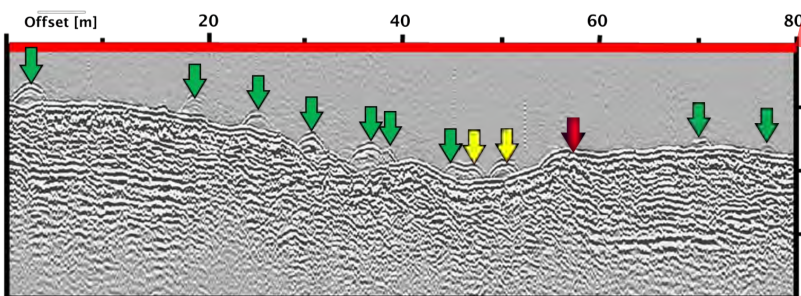
Integration with magnetics and MB

MB + Magnetics

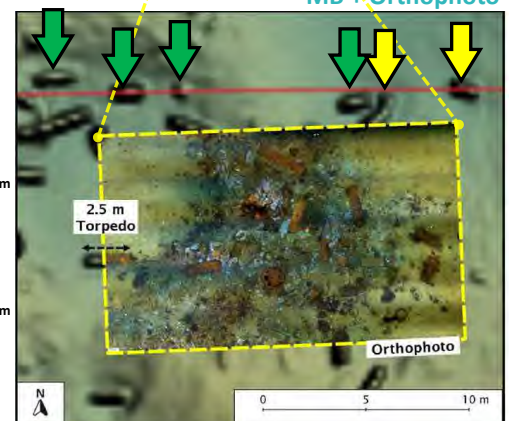
Magnetic profile



Sub-bottom profile

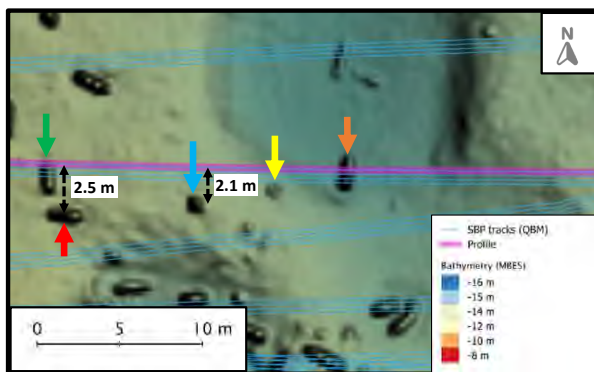


MB + Orthophoto

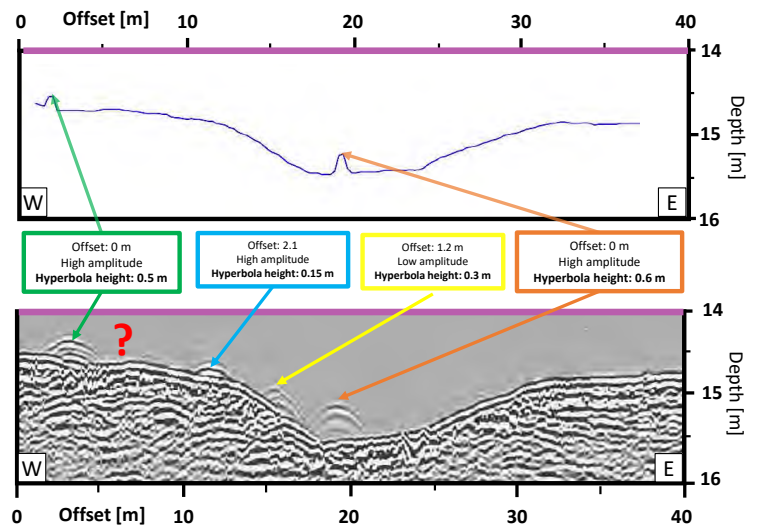


Amplitude and detection ranges

MB mapping



MB Topographic profile

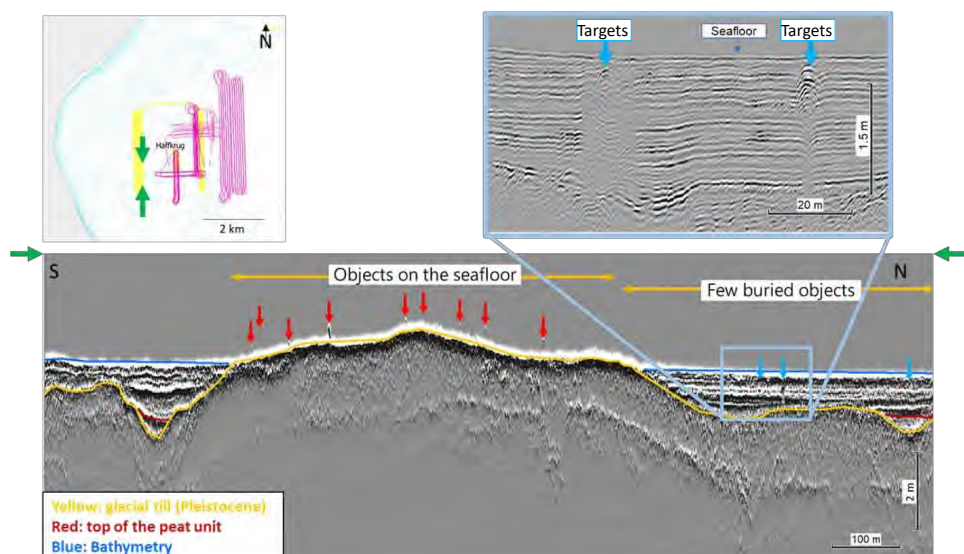


Sub-bottom profile

10

The importance of geology

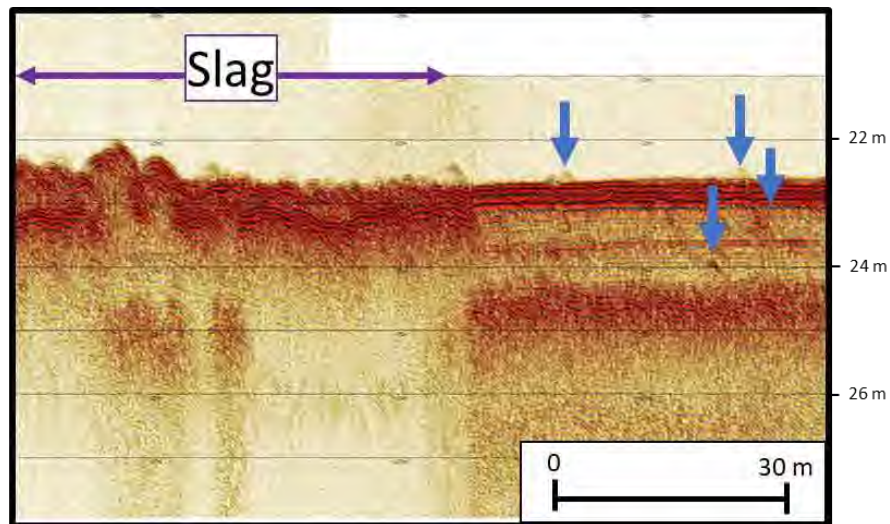
Lubeck Bay 2021



11

The importance of geology

Lubeck Bay 2021



12

VLIZ

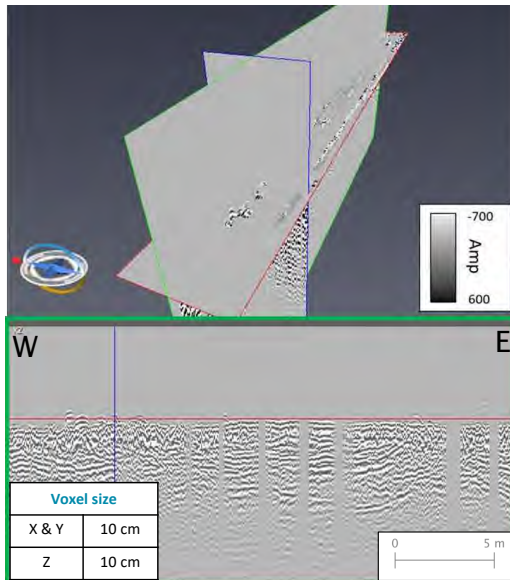
Ultra-high resolution acoustics

3D Results

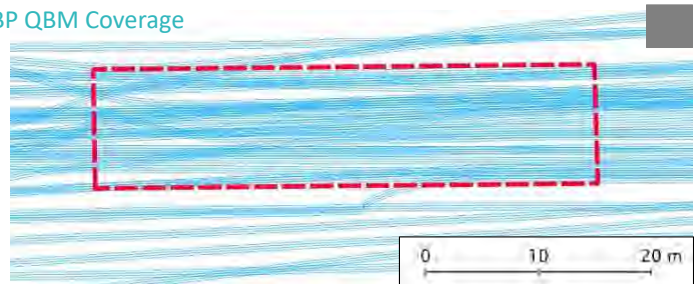
VLIZ

3D Results

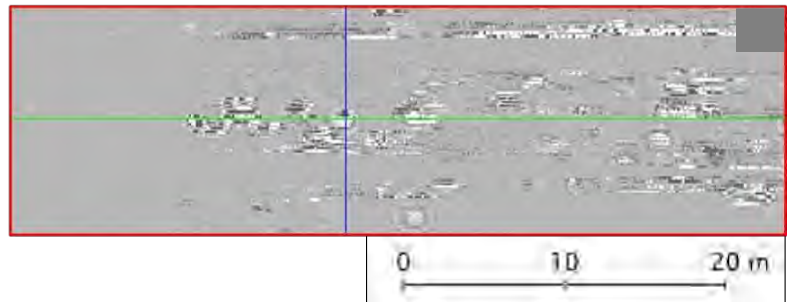
Kolberger Heide



SBP QBM Coverage



Depth slice



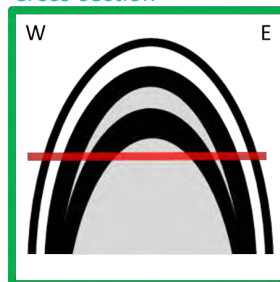
VLIZ

14

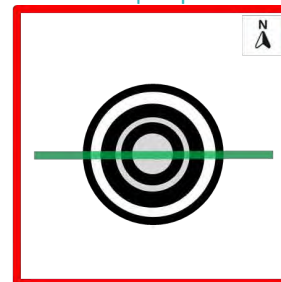
3D Results

Kolberger Heide

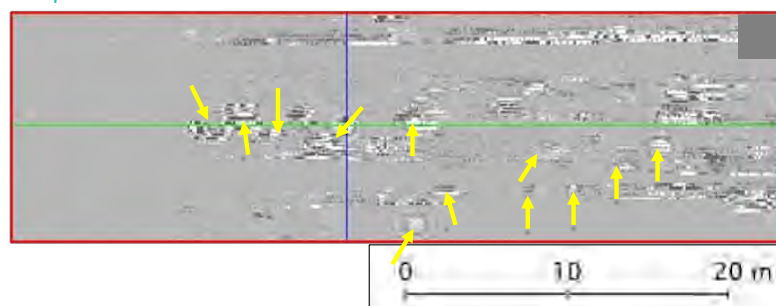
Cross-section



Plain View | Depth slice



Depth slice



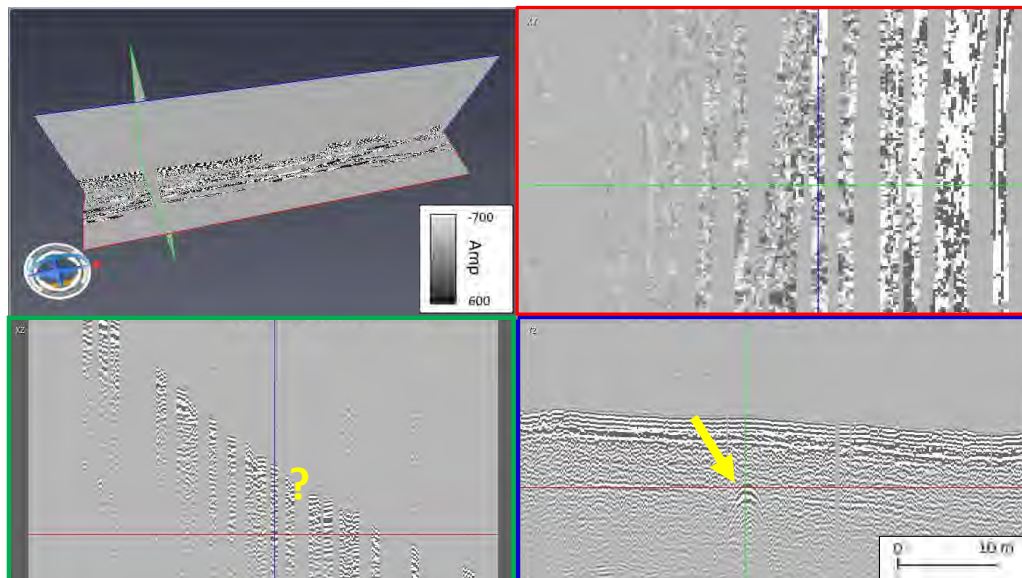
VLIZ

15

3D Results

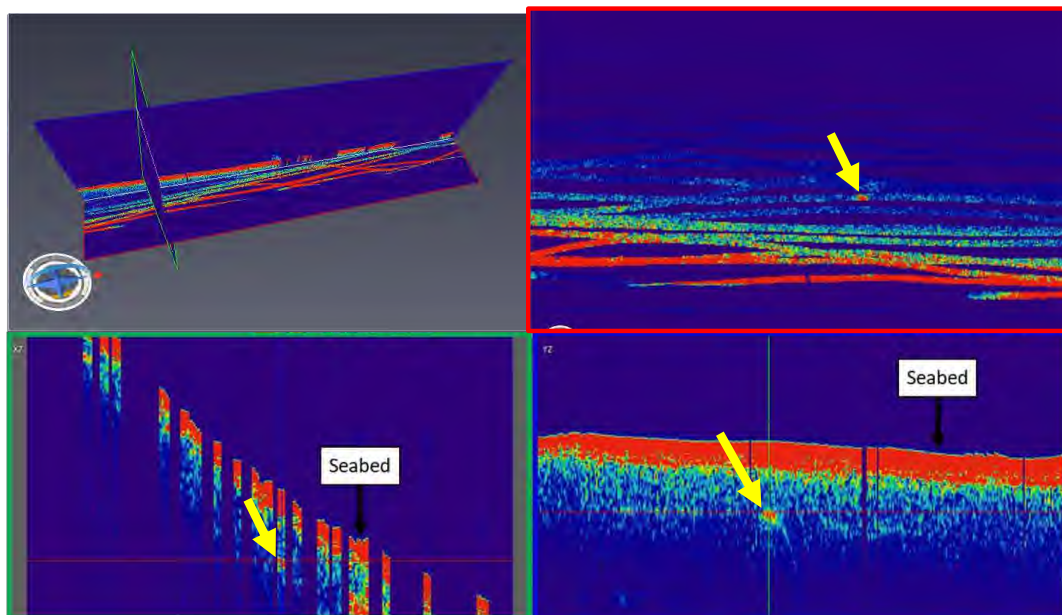
Lubeck Bay #1

Full wave-form 3D volume



VLIZ

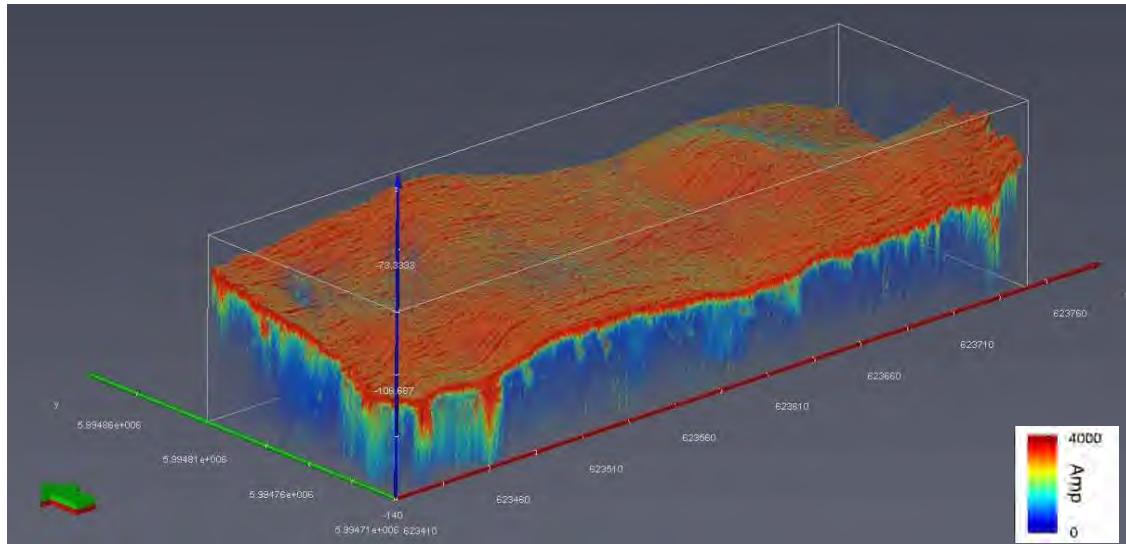
3D Results – Lubeck Bay #1



Envelope demodulated 3D volume

VLIZ

3D Results – Lubeck Bay #2

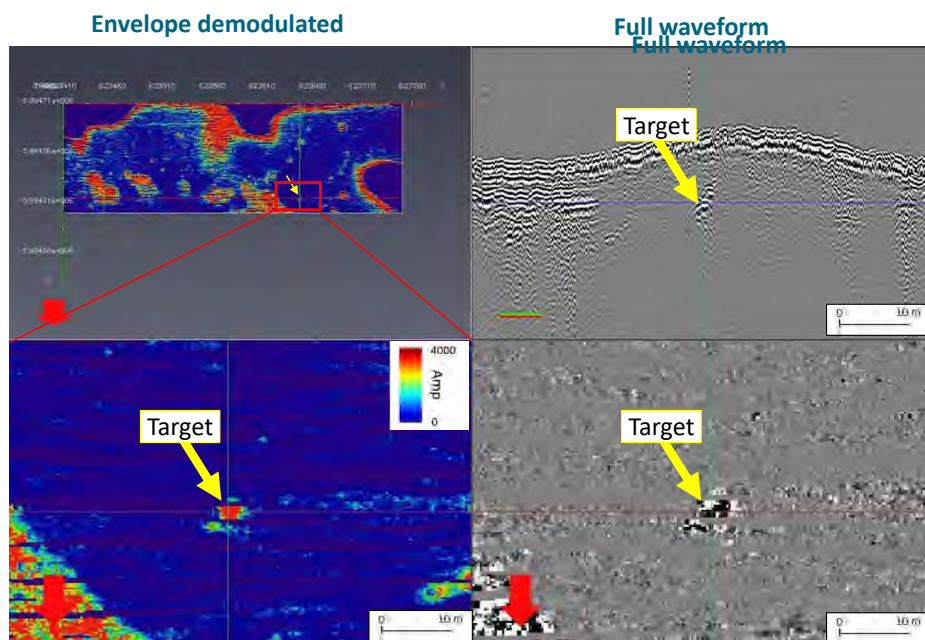


Envelope demodulated 3D volume

18



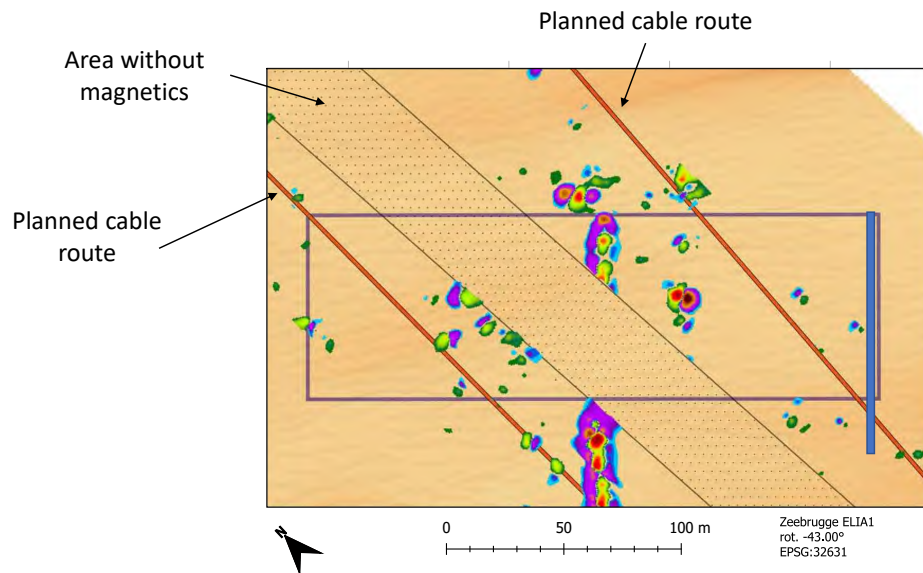
3D Results – Lubeck Bay #2



19



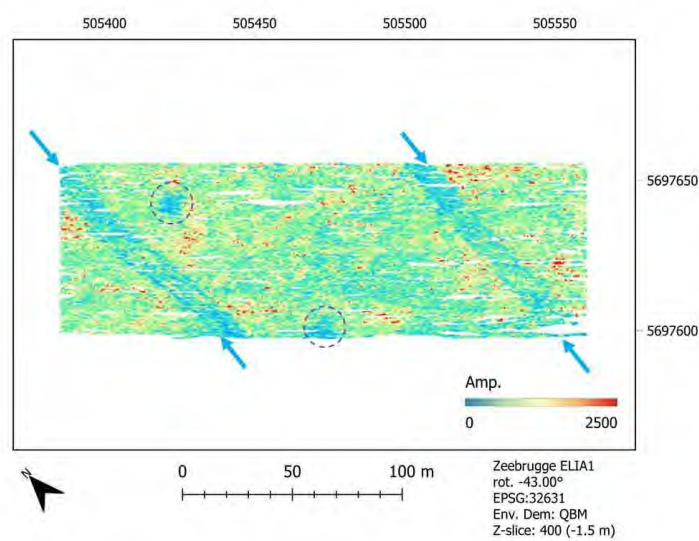
3D Results – Zeebrugge



20



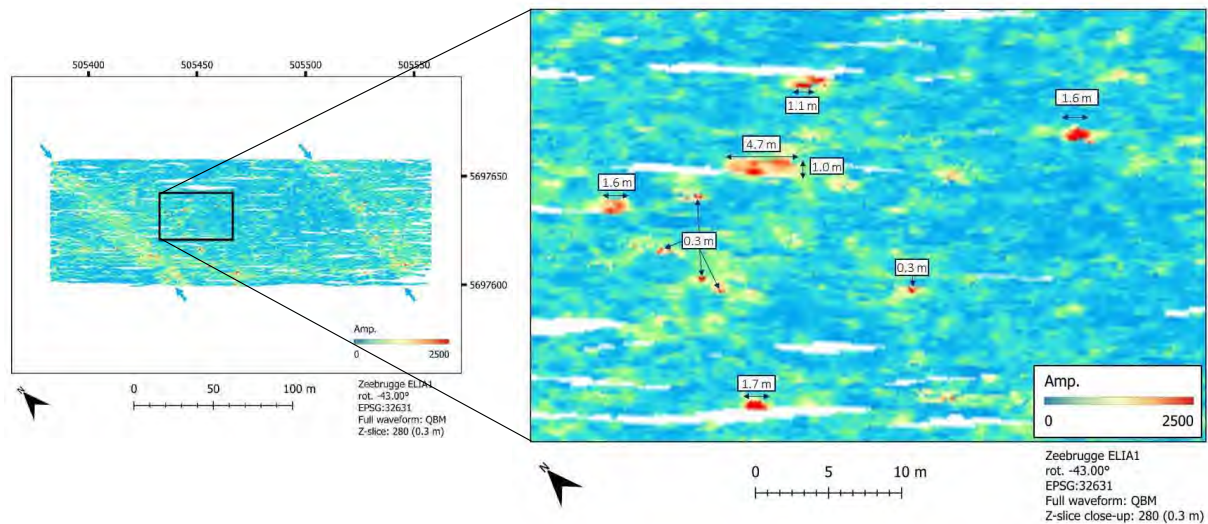
3D Results – Zeebrugge



21



3D Results – Zeebrugge



22



Some conclusions

What have we learned so far?

- Different expressions of buried and exposed munition in SBP data
- 2D data allow objects to be 'missed'. Detection range <2 m.
- 3D data require optimal acquisition (coverage, weather, ...). However, it is suitable for mid to large feature interpretation (<10 m).
- Identification of small-scale features remains difficult in this data set. Transducer movements are not fully compensated, the only motion correction applied is the heave.
- Integration with MB and magnetic data remains crucial

Future work

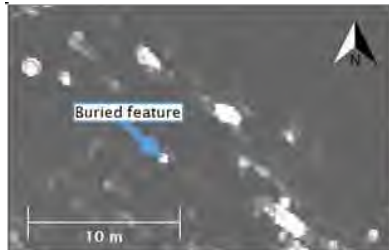
- Post-processing of 3D data to improve 3D data quality – e.g. variance attributes
- Potential of AUV for SBP data – implementation of transducer on VLIZ AUV is considered
- 2D/3D tests in controlled test site in 2023 (La Spezia, La Ciotat)

23

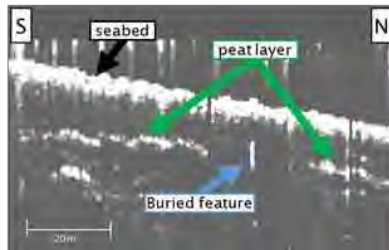


Post-processing – variance attributes

Variance 3D attribute: Depth slice



Variance 3D attribute: cross-section



3D modeling

